

Model:

T-49G-HC~FGD01

T-Series:

Reach-In Glass Swing Door Refrigerator with Hydrocarbon Refrigerant



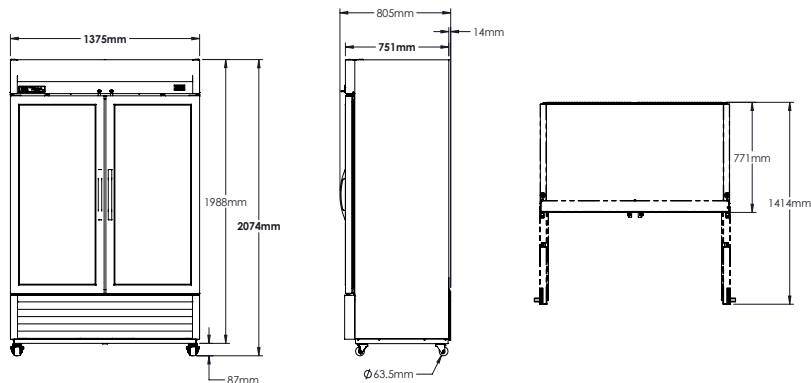
T-49G-HC~FGD01

- ▶ Factory engineered system using environmentally friendly R290 hydro carbon refrigerant.
- ▶ High capacity forced air refrigeration system that holds temperature of 0.5°C to 3.3°C for the best in food preservation.
- ▶ Stainless steel solid door and front. The very finest stainless with higher tensile strength for fewer dents and scratches.
- ▶ LED interior lighting provides more even lighting throughout the cabinet. Safety shielded.
- ▶ Energy efficient, "Low-E", double pane thermal insulated glass door.
- ▶ Adjustable, heavy duty PVC coated shelves.
- ▶ Foamed-in-place using a high density, environmentally friendly polyurethane insulation.
- ▶ Positive seal self-closing door. Lifetime guaranteed door hinges and torsion type closure system.

Bottom mounted units feature:

- ▶ "No stoop" lower shelf
- ▶ Easily accessible condenser coil for cleaning

PLAN VIEW



ROUGH-IN DATA

Voltage: 220-240V/50Hz

Specifications subject to change without notice.
Chart dimensions rounded up to the next whole millimeter (inches rounded up to the next 1/8").

Model	Doors	Shelves	Cabinet Dimensions (mm)			Total Display Area (m ²)	EEC	EEI	Temperature Class	Annual Energy Consumption (kWh)	Crated Weight (kg)
			W	D†	H						
T-49G-HC~FGD01	2	8	1375	750	2074	1,38	B	14,5	M1	1450	211

† Depth does not include 42 mm for door handle.

Test Standard: EN23953 - Climate Class 3 (25°C, 60% relative humidity).